



BEYOND SHIPBUILDING

adsb.ae

ABU DHABI SHIP BUILDING PJSC

PO Box 8922, Mussafah Industrial Area

Abu Dhabi, United Arab Emirates.

Tel: +971 2 502 8000

Fax: +971 2 502 8065

For all Dry-Docking and Fleets Maintenance Enquiries please email marketing@adsb.ae

Our Vision, Mission and Values

OUR VISION

At Abu Dhabi Ship Building, we are striving to become the leading regional shipyard that drives innovation, delivers dependable solutions and builds lasting relationships that brings real value to our clients and other stakeholders.

OUR MISSION

Through our state-of-the art facilities, innovative new technologies and technical workforce, we are committed to going beyond shipbuilding. We work towards offering our growing portfolio of customers the full spectrum of new building, repair and conversion services for military and commercial vessels, including Marine Services to the GCC's naval fleet and a tailored service offering to the oil and gas industry.

OUR VALUES

UNCOMPROMISING QUALITY

We offer highly-efficient and reliable product and service delivery while maintaining industry-leading safety standards

CUSTOMER FOCUSED INNOVATION

We are motivated to continually develop the latest advanced solutions to create greater impact for our clients

COLLABORATION

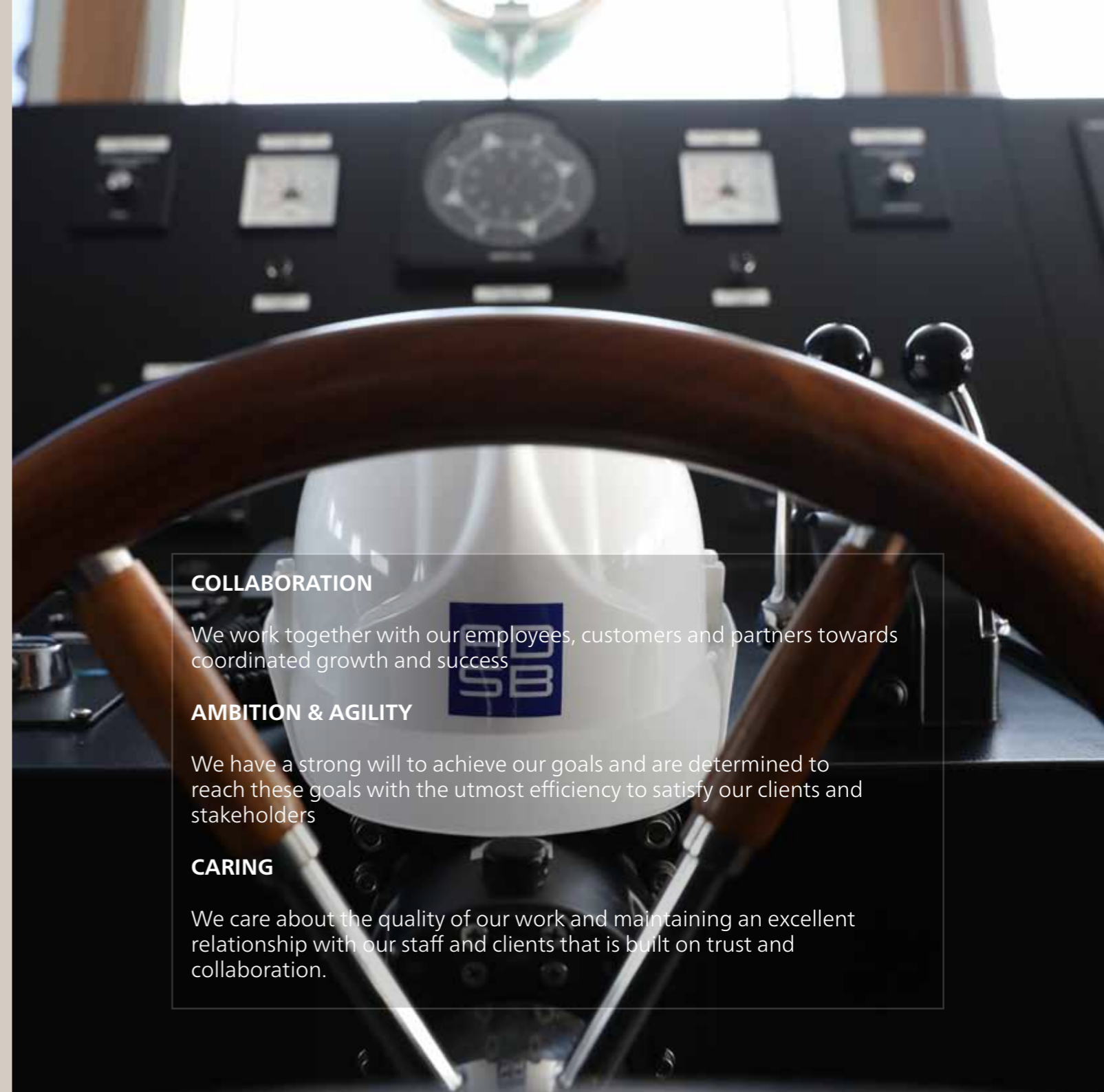
We work together with our employees, customers and partners towards coordinated growth and success

AMBITION & AGILITY

We have a strong will to achieve our goals and are determined to reach these goals with the utmost efficiency to satisfy our clients and stakeholders

CARING

We care about the quality of our work and maintaining an excellent relationship with our staff and clients that is built on trust and collaboration.



ADSB Mussafah Yard Facility

Synchrolift

Lifting Capacity = 2,000 Tons
Length = 80 meters
Breadth = 19 meters
Max. Draught of Ship = 4.5 meters

Dry Berth

80m long x 8 dry berths, Transfer system and
80m long x 2 covered dry berths
Travelift for docking vessels up to 500 tons
20 dry berths for vessels less than 50 meters

Wet Berth

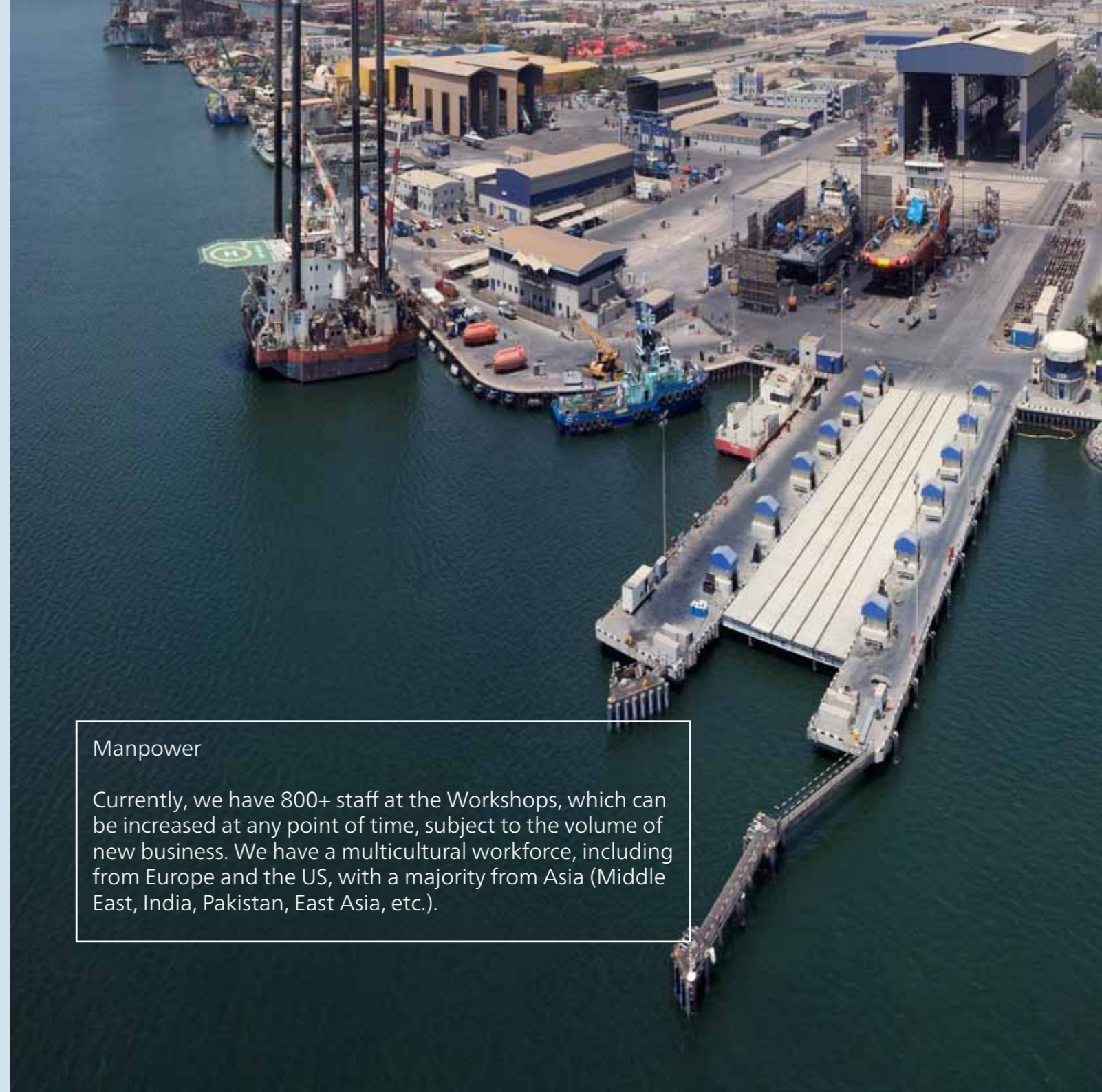
160 meters Length X 1 - draft 6 meters
80 meters Length X 2 - draft 5 meters
50 meters Length X 1 - draft 5 meters
30 meters Length X 4 - draft 3 meters

Product Division Organization

Steel fabrication, Machine shops, Electrical/
Electronics, Piping, Calibration, Aluminum
fabrication, Fiberglass and composite
molding shops, etc.

Manpower

Currently, we have 800+ staff at the Workshops, which can be increased at any point of time, subject to the volume of new business. We have a multicultural workforce, including from Europe and the US, with a majority from Asia (Middle East, India, Pakistan, East Asia, etc.).





ADSB Mina Zayed Facility

Floating Dock

Lifting Capacity = 10,000 Tons

Length = 180 meters

Breadth (Inside) = 30 meters

Max Docking Draught of Ship = 6.5 meters

Wet berth adjacent to floating dock: 250 meters

length x 13 meters draft

Additional wet berths if required can be arranged by ADSB.

Fabrication Facility

“The steel and aluminum fabrication shops allow the construction of modular units with advanced outfitting, using the latest 3D modeling techniques”

The steel and aluminum fabrication shops are fitted with modern machinery and equipment, supported by a highly skilled team to carry out major repairs. The shipyard's fabrication shop has the following:

- High-capacity equipment such as profile cutting machines for steel and aluminum sheets and machines for bending, rolling, shaping and forming
- Purpose-built welding planes using a variety of modern welding techniques for mild steel, stainless steel, aluminum and copper nickel
- Two bays 94 meters x 21 meters each, including 4,000 square meters of covered area and 80 meters of long open space
- Storage area of 5,000 square meters with overhead cranes of various capacities

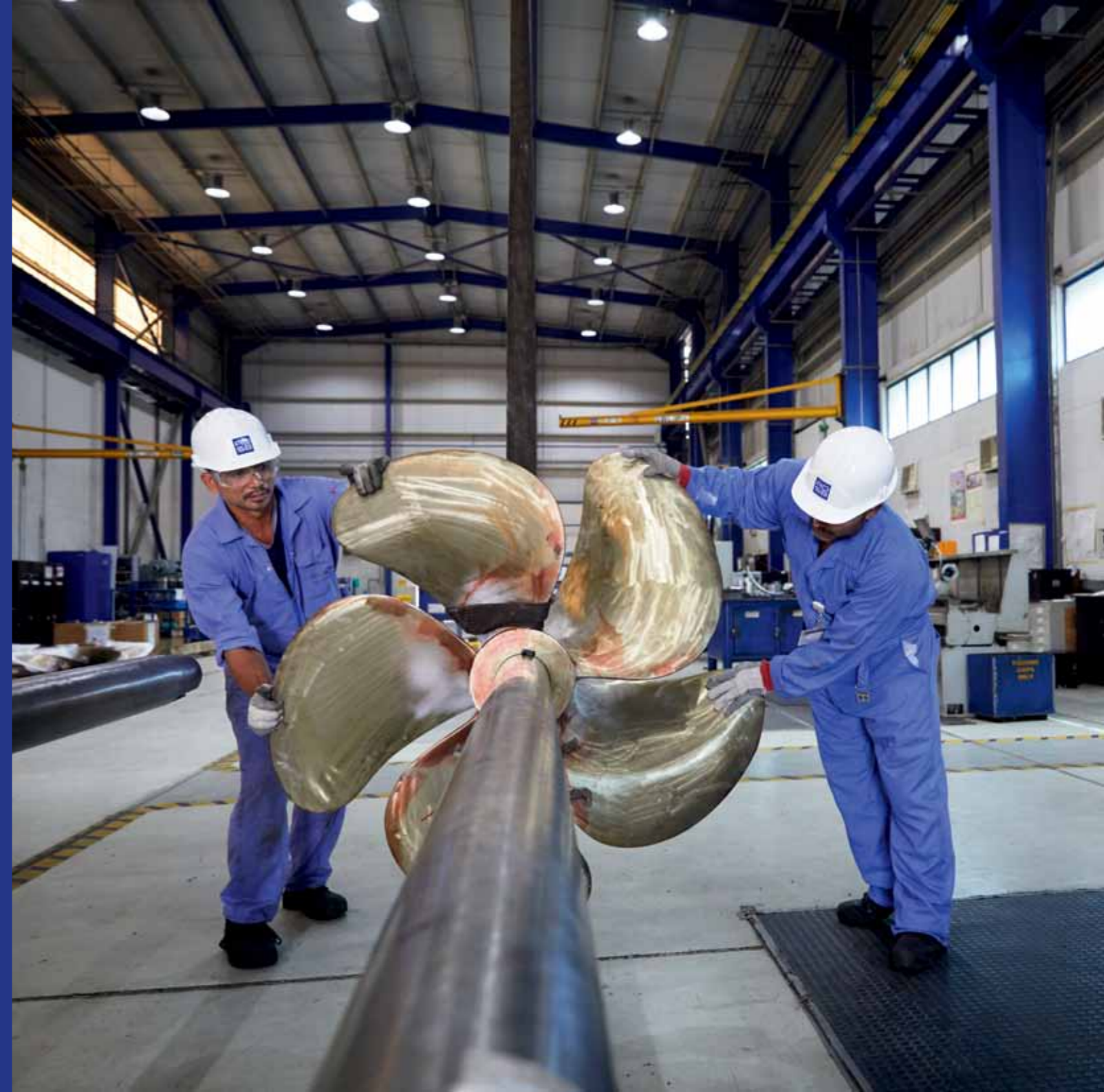


Mechanical Services

“The mechanical shop offers specialist repair, refurbishment, and maintenance solutions for a range of equipment - ensuring rapid turnaround, efficiency and quality.”

The mechanical shop is well-equipped with several sophisticated machine tools and has an environment controlled workspace.

- The workshop is well-equipped for carrying out repair and overhauling of main and auxiliary engines, bow thrusters, various types of propulsion systems, rudders, hydraulic machinery, valves, pumps, coolers and heaters, etc.
- The shop covers a floor area of 900 square meters , and has lathe machines, a frame press, universal milling machines, three grinding machines, a horizontal band saw, a slotting machine, a chop saw, and cable winding machines.
- A 15-tonne overhead crane and six wall mounted jib cranes are available for lifting.
- The workforce comprises of highly-skilled machinists, millwrights and mechanical fitters -- who are also proficient in laser alignment, white metal work and chock fastening.



Piping Work

“The pipe shop has the latest equipment and some of the region’s best craftsmen with extensive experience and expertise”

The pipe shop houses the latest automated equipment which allows for indoor prefabrication before transferring to vessels for installation.

- Repair capabilities include steel, aluminum and pipes made of exotic material and PVC.
- The workshop is 750 square meters in area and has profile cutting, pipe bending & pipe fitting machines, and welding procedures for most materials.
- The equipment includes overhead cranes, a pallet lifter, a blasting machine, pedestal grinding machines, drilling machines, thread cutting, hydraulic pipe bending machines and a speed cutter. Testing bays and a hydro test area have been incorporated.
- The shop has seven 500-kilogram wall mounted jib cranes and a weld fume extraction system.



Electrical Works

“The electrical shop is well-equipped to facilitate the delivery of high-quality workmanship by a trained and experienced team”

The electrical shop offers a comprehensive range of services such as the repair of motors and generators, troubleshooting and repair of lighting systems, power systems (AC & DC), switchboards, control systems and panels.

- The shop has an area of 910 square meters, and service offerings include cable and cable tray installation, testing, cleaning, and refurbishing services for electric panels and switchboards.
- The workshop has a calibration laboratory that can repair various types of meters, including multi-meters, clamp meters, panel meters, isolation meters and pyrometers.
- Varnish is stocked in the warehouse and all materials for repair and maintenance are acquired readily.
- Overhaul of motors of up to 500 kilowatts is carried out at the workshop. Testing equipment available include a 5060/ hertz test bench, a motor starter panel and a baking oven 180cm x 200cm x 220 cm in size.



Outfitting Services

“The outfitting services range from minor refurbishments to major refits using a range of materials, to achieve excellent customer-focused project management”

The carpentry, sheet metal and insulation shops are well-equipped to handle the outfitting needs of vessels.

- The sheet metal shop has a universal steel worker, lock forming machine, press brake, shearing machine plate roll, bender, nipple machine, vertical band saw, spot welding machine, 10-tonne frame press and other state-of-the-art equipment.
- The carpentry section is equipped with a heavy-duty circular saw, wood lathe, vertical band saw, tool grinders, a joiner, and a computerized engraving machine.
- The insulation shop has a sewing equipment to create custom-made engine, pipe and ceiling insulations.
- Collaborations include specialized companies to carry out major refurbishment for accommodation work.

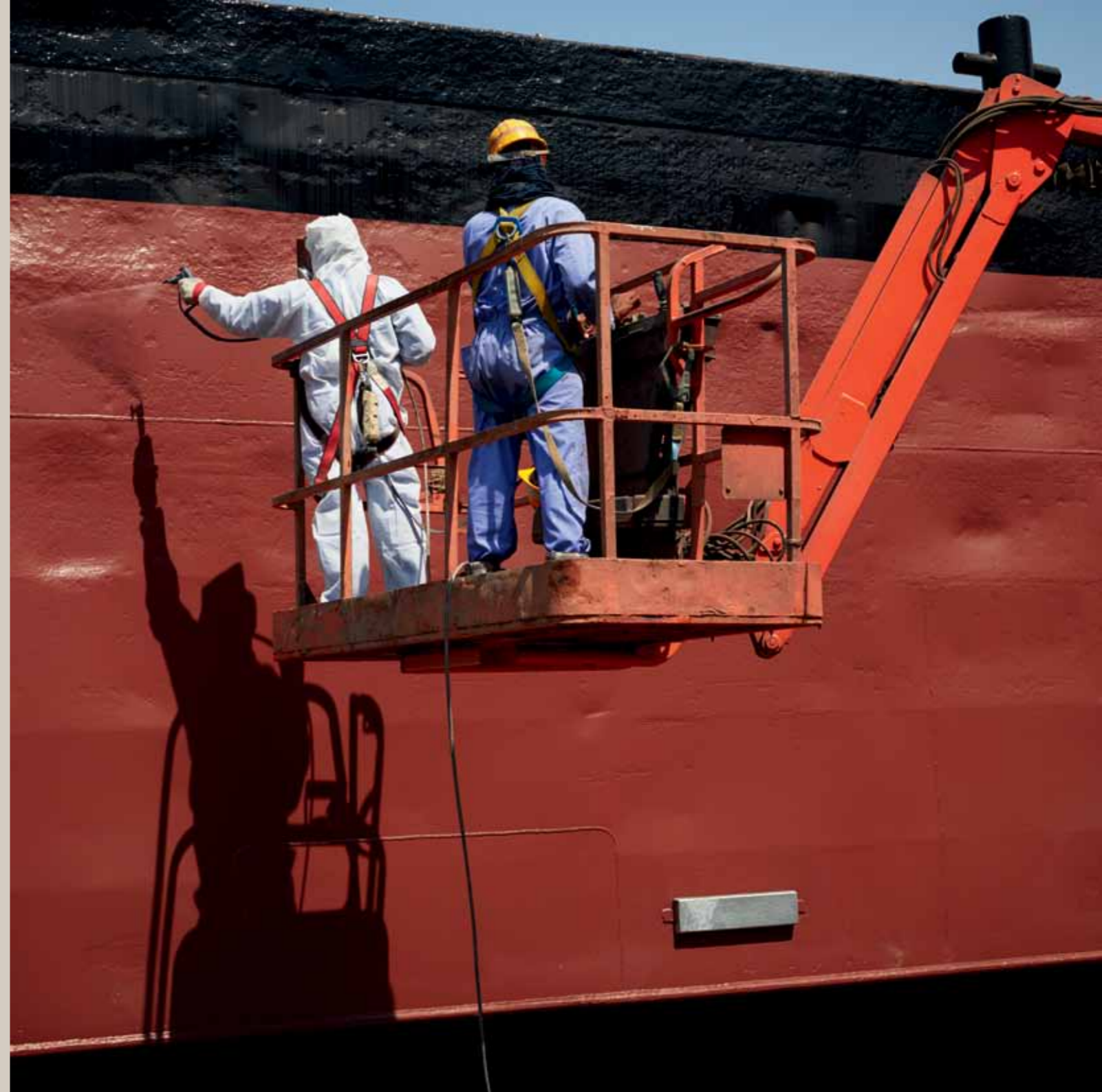


Blasting, Painting and Hull Treatment

“Blasting, painting and hull treatment operations of diverse scope and scale have been implemented successfully on several projects”

The shipyard has enclosed dust-free blasting sheds, cabinets and machines for various blasting requirements. Hull treatment operations are carried out according to clients' requirements.

- Twin climate-controlled blasting and painting sheds of dimensions 25 meters x 15 meters are available.
- The shipyard in Mina Zayed carries out hull treatments with environmentally friendly hydro-blasting robots. The shipyard in Mussafah has the option for carrying out hull treatments with grit blasting machines, as well.
- Extensive tank coating, surface preparation and painting of underwater, main decks, engine rooms, funnels, masts, chain lockers, anchors & chains, and antifouling coating are carried out regularly.
- Different types of grits, like copper slags, garnets and steel grits are used.
- Quality of implementation is monitored at every stage to ensure that high standards are maintained throughout.



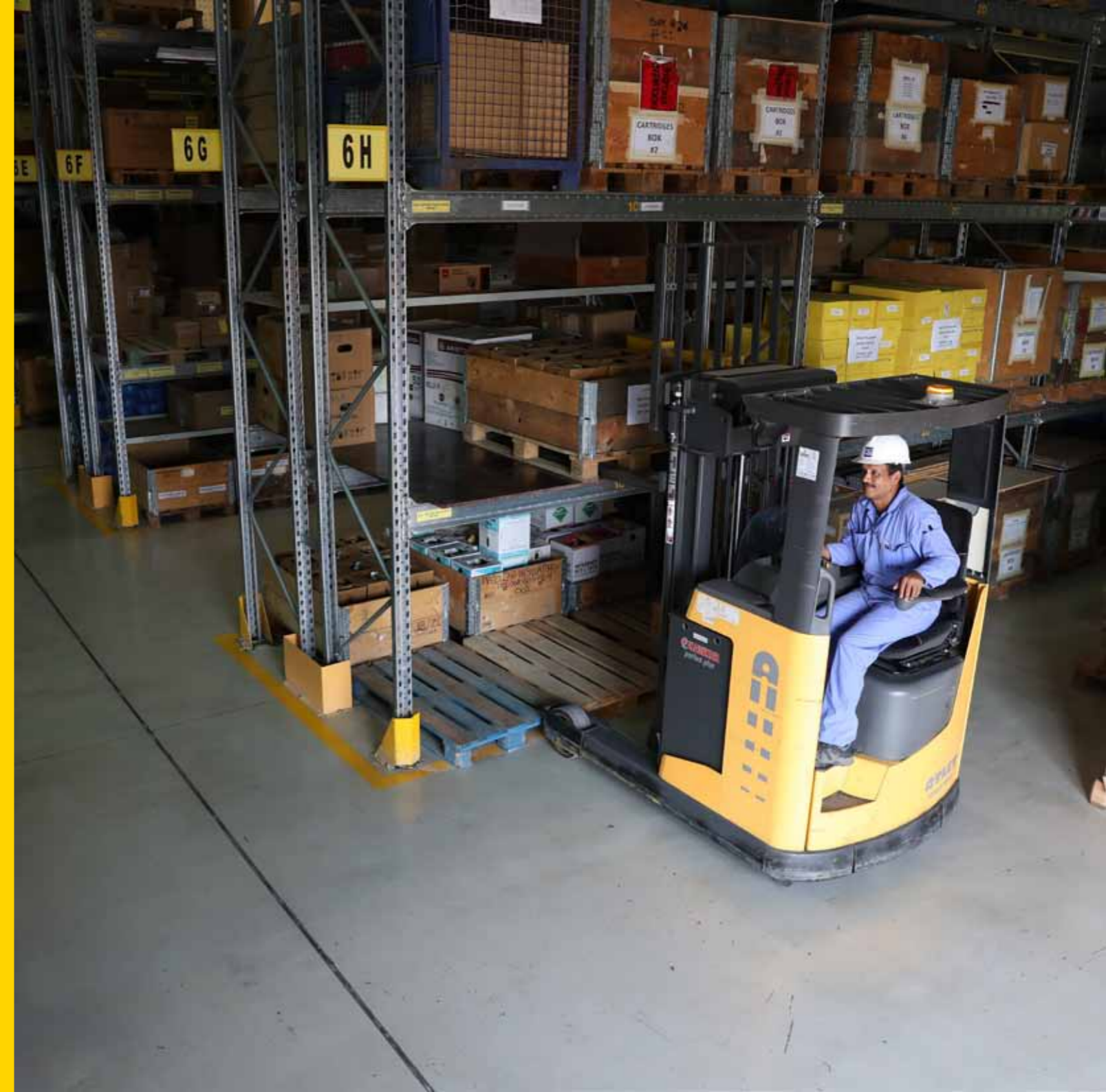
Warehousing Facilities

“Warehouses and storage areas are strategically located to ensure prompt implementation of projects”

The carpentry, sheet metal and insulation shops are well-equipped to handle the outfitting needs of vessels.

The shipyard has a warehouse complex which allows storage of all critical project-specific items – as well as stock items needed in day-to-day operations by all shipyard departments.

- There are four large air-conditioned warehouses, six open spaces and satellite stores to facilitate storage and distribution at project sites.
- The air-conditioned storage area is 8,130 square meters , the non-air-conditioned storage area is 288 square meters , the open area is 5,602 square meters and the container storage is 1,592 square meters.
- The warehouses are controlled through a highly organized stock control system.
- A framework agreement exists with suppliers to deliver items, as required.



Yard Services

“Yard Services are offered by an expert team that can handle any contingency efficiently”

Comprehensive yard services are offered by a highly capable team of expert riggers, divers and yard cleaning personnel.

- All required support services for docking and undocking of vessels are provided in a timely manner.
- A system is in place for scrap and garbage disposal, reuse and cleaning of the yard.
- Mobile equipment, such as fork lifts, shuttle lifts and mobile cranes are well-maintained and ready to be pressed into service.



ADSB

BEYOND SHIPBUILDING

adsb.ae